

Visualize Major Scales on your Soprano Pan

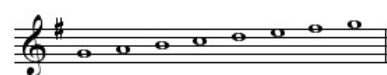
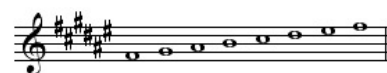
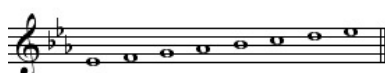
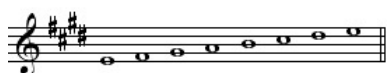
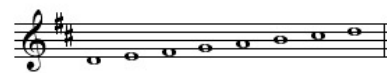
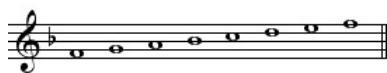
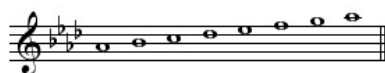
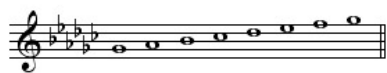
Realisation by www.pan-jumbie.com

C major



I II III IV V VI VII
C D E F G A B

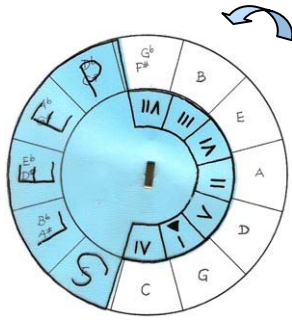
reverse



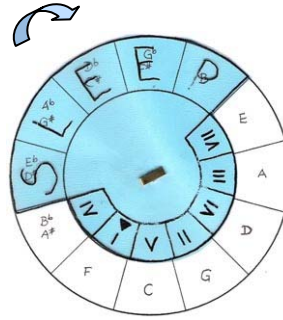
sharp

flat

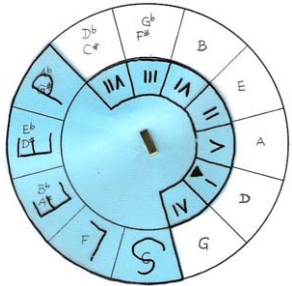
G major



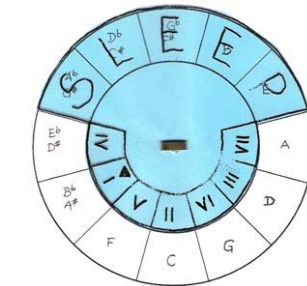
F major



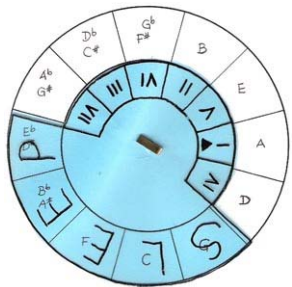
D major



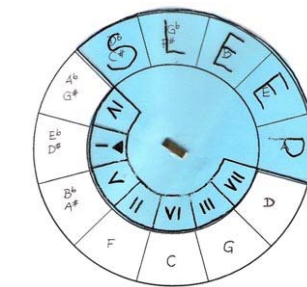
Bb major



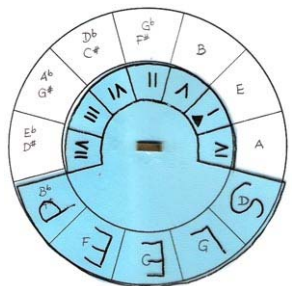
A major



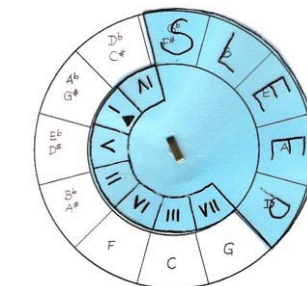
Eb major



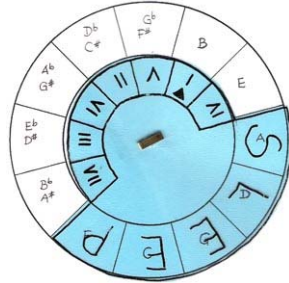
E major



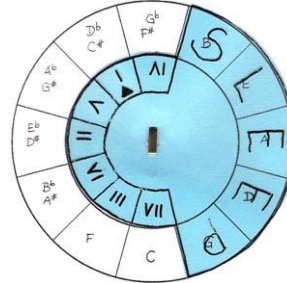
Ab major



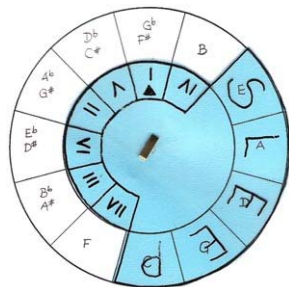
B major



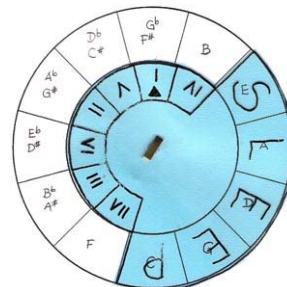
Db major



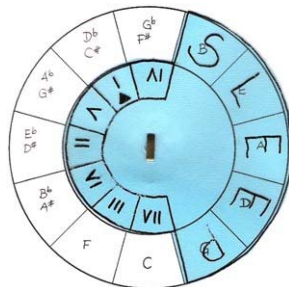
F# major



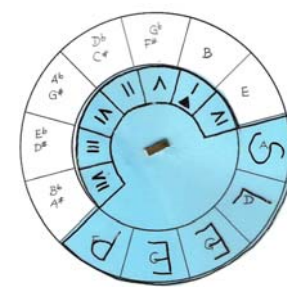
Gb major



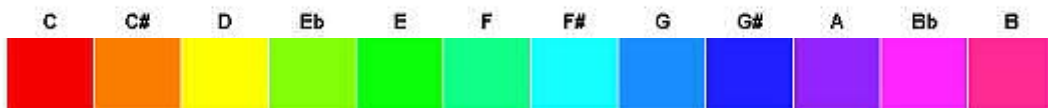
C# major



Cb major



if you want to colour use these



Help yourself with new positioning devices for other scales you learned.
Use the same pocket pan - just replace the propeller and rotate, off of each root note.

Visualize and remember - there's method in that music!